

Instruction Sheet

Follow these instructions to remount the touch screen controller.

NOTE: If reworking crated units in a warehouse, a large hole will need to be cut out to access ALL the controllers.

If the touch screen controller plastic surround is cracked, document and order a replacement controller to replace at startup.

1. Remove the two Phillips head screws from the upper left and right corners of the controller (see Figure 1).
2. Slide the controller up to disengage it from the bezel (see Figure 2).
3. Lift the controller out from the bezel (see Figure 3).
4. Lower the controller and rest it on the bottom of the control box (see Figure 4). The black tether on the right will support the controller.
5. Disconnect the RJ45 cable from the SIB board **FIRST** (see Figure 5).
6. Disconnect the ground cable and the speaker cable and the USB cable (if applicable) (see Figure 6).
7. Disconnect the lanyard tether from the frame (see Figure 7) to remove the controller.
8. Relocate the controller away from the fryer.
9. Lay the affected controller face down on a flat surface (see Figure 8).

In This Kit		
Part #	Description	Qty
130401843	SCREW, M3 X 10 THREAD FORMING	4
130421195	BEZEL, UX UI	1
130437550	FRAME, UX UI ATTACHMENT	1
8198098	INSTRUCTIONS	1



Figure 1

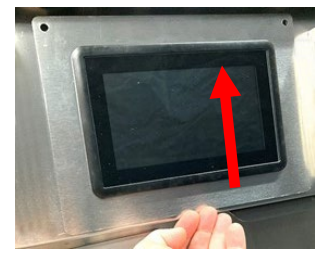


Figure 2



Figure 3

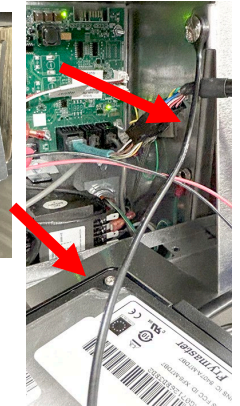


Figure 4

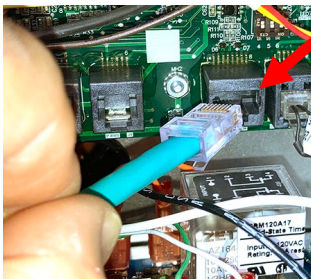


Figure 5

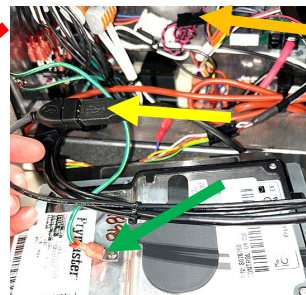


Figure 6

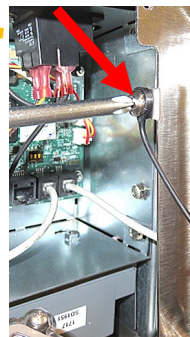


Figure 7

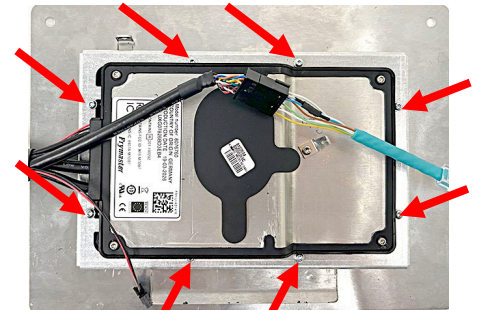


Figure 8

10. Using a T-10 Torx bit remove the eight (8) screws attaching the controller frame attachment to the controller bezel (see Figure 8). Set the screws aside to attach the new frame attachment.

11. Remove the controller frame attachment and discard the frame attachment (see Figure 9).
12. Lift up on the controller bezel and carefully remove the controller from the bezel noting the position of the harnesses and discard the bezel (see Figure 10).
13. Insert the controller wires through the front of the new control bezel. Ensure they are oriented as shown in figure 10.
14. Insert the wire harnesses through the new control frame attachment. Ensure the frame is oriented with the two (2) tabs as shown on Figure 11.
15. If using a power driver with a clutch, set to the lowest torque setting, to avoid stripping out the plastic screw boxes and attach the control frame to the bezel using the screws removed in step 10. Finish tightening the screws by hand (see Figure 12).
16. Reverse steps 1-7 to reattach the controller to the fryer.
17. Power on the fryer.
18. Ensure the controller boots up, if not, check connections.

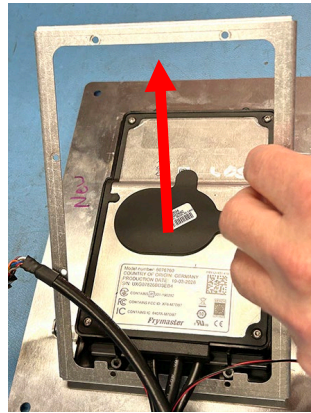


Figure 9

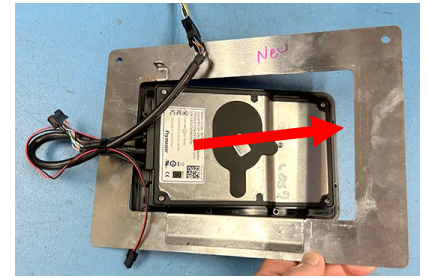


Figure 10

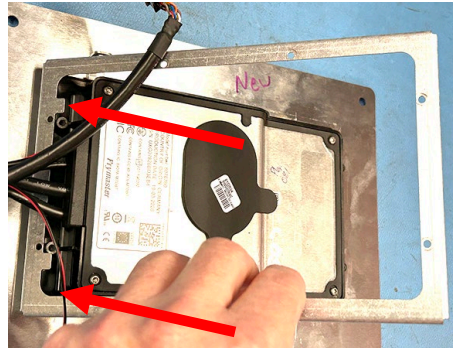


Figure 11

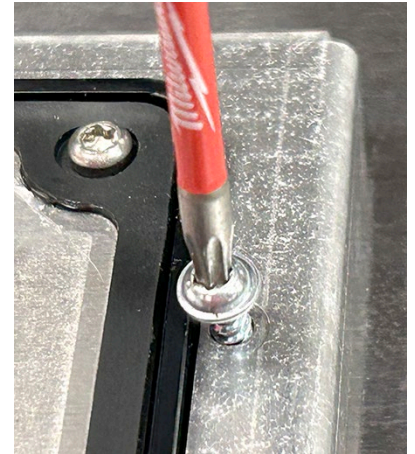


Figure 12